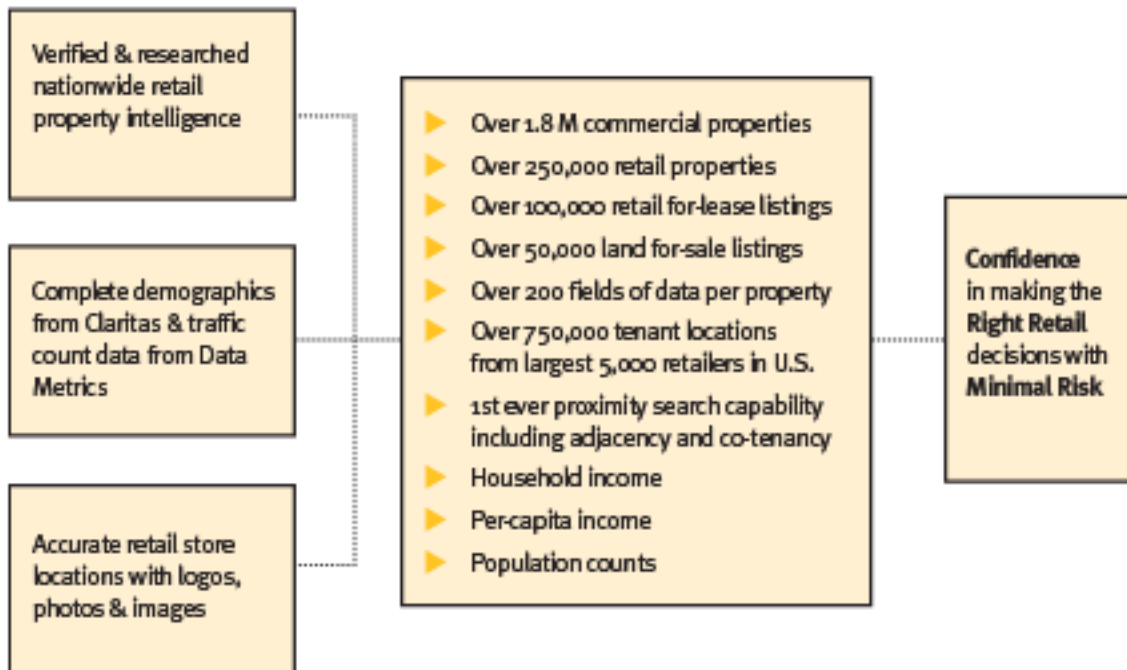


Retail Introduction

WELCOME TO THE NEW WORLD OF RETAIL!

The Retail dimension of CoStar Property Professional combines the extensive commercial real estate property listings, analytic tools, and professional-quality reports of Property Professional with detailed nationwide retail property intelligence.

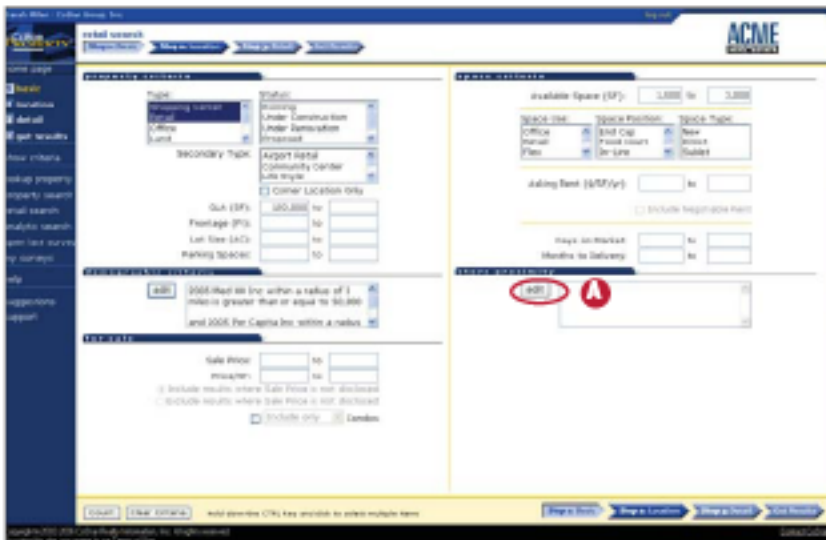


NOTE: The Retail Dimension User Manual is part of a Property Professional User Manual. Please refer to it if you find that you need more information.

Retail Basic Search

Store Proximity

Search results should be located at least 3 miles away from a Starbucks, and in a location that contains a drugstore or grocery store.



A. Click on "edit" to add store proximity requirements to your search.

SMART TIP

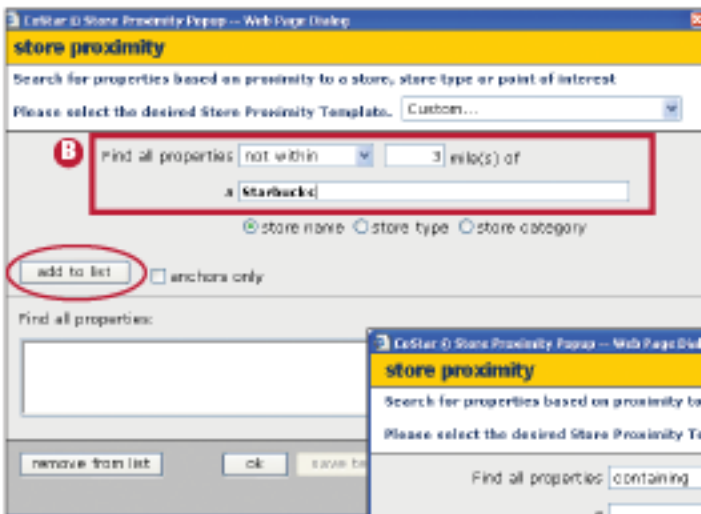
Remove from List

To remove a name or category from the search criteria field, highlight it and click on "remove from list."

SMART TIP

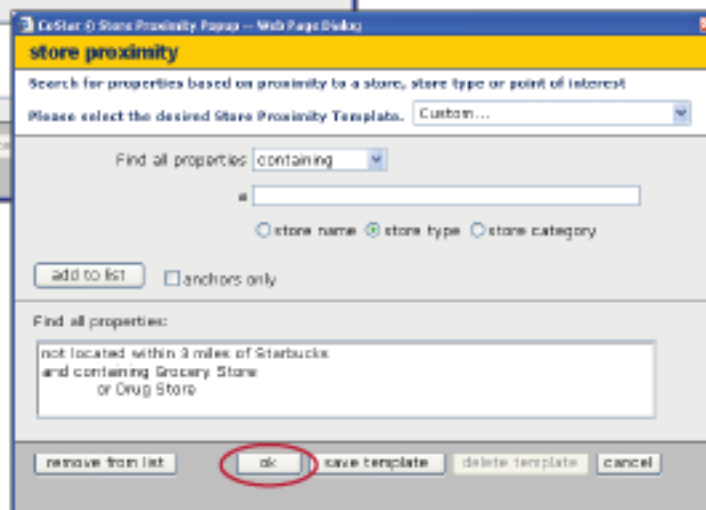
Anchor Tenants

Store proximity also lets you search for stores that are anchor tenants. Click on the checkbox in the Store Proximity popup.



B. Use this popup window to find properties not within 3 miles of a Starbucks, and containing a grocery store or drug store.

C. Click "Add to list."



You can define your search by store name, store type or store category. Choose one or all three.